



1 Duchess Close, Strood, Rochester, Kent, ME2 3TX

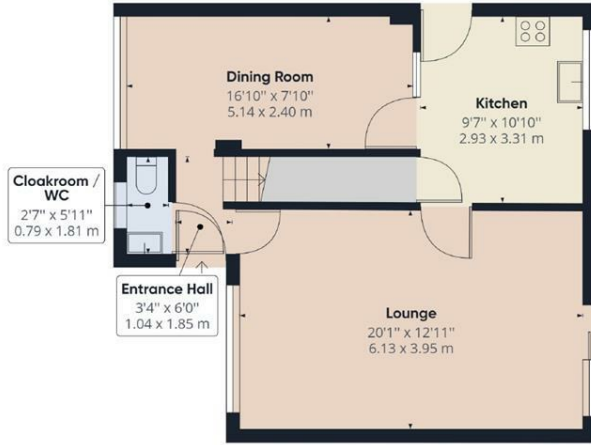
draft details.

STUNNING THROUGHOUT**EXTENDED**GARAGE**LANDSCAPED GARDEN**RESIN DRIVE AND PATIO**SOUGHT AFTER LOCATION

The stunning 4 bedroom extended house in the the sought after "Rede Court Road" area has just become available to the sales market. This property has been recently refurbished boasting a modern new fitted kitchen, with tasteful decor throughout. Accommodation comprises of entrance hall, spacious large lounge, modern fitted high gloss kitchen, a separate dining room and a hand downstairs cloakroom/wc. To the first floor there are 4 bedrooms with bespoke wardrobes to the master and a neutral family bathroom. Added benefits include gas central heating, double glazed windows, a garage , landscaped rear garden with a resin patio and a resin drive to front for providing parking. Duchess Close is a quiet cul-de-sac, just off of the popular Rede Court Road area. This property is conveniently located with easy access to local schools, shops and motorway links and viewings are an absolute essential.

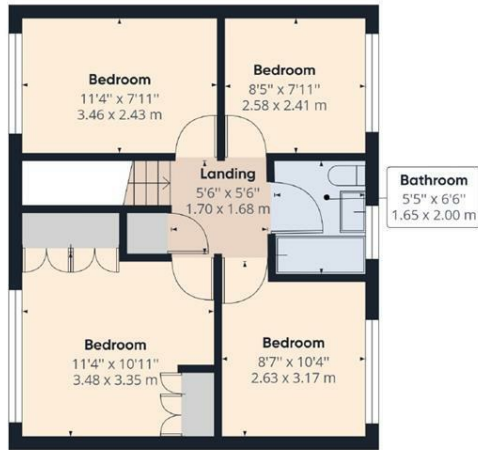
- 4 BEDROOMS
- 2 RECEPTIONS ROOMS
- GARAGE
- LANDSCAPED GARDEN
- RESIN PATIO & DRIVE
- EXTENDED
- REFURBISHED
- MODERN HIGH GLOSS KITCHEN
- POPULAR LOCATION

£525,000



Ground Floor Building 1

Approximate total area⁽¹⁾
1029.69 ft²
95.66 m²



Floor 1 Building 1

(1) Excluding balconies and terraces

While every attempt has been made to ensure accuracy, all measurements are approximate, not to scale. This floor plan is for illustrative purposes only.

GIRAFFE360

